

Light

## ECOLOBI S1P LOW TLS S1 PS

ECOLBIS1PT

**Wide-fitting trainer like safety shoe with recycled upper material**

Made with a recycled upper, ECOLOBI protects both your feet and the environment. This metal-free and lightweight safety shoe features a composite toe cap and ESD protection. The rubber outsole grants exceptional slip resistance, while resisting oil, fuel, chemicals, and extreme temperatures. ECOLOBI has an extra wide fitting and TLS closure.

Upper	Microfiber, Recycled Mesh
Lining	Recycled Mesh
Footbed	SJ Memory foam footbed
Midsole	Anti-puncture Textile
Outsole	Phylon/Rubber (NBR)
Toecap	Composite
Category	S1 PS / SR, ESD, FO, HRO
Size range	EU 35-48 / UK 3.0-13.0 / US 3.0-13.5 JPN 21.5-31.5 / KOR 230-315
Sample weight	0.535 kg
Norms	ASTM F2413:2018 EN ISO 20345:2022



BLK



BLU

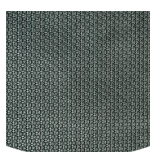


KHA



### TLS (Twist Lock System)

Safety Jogger's innovative TLS closure allows you to quickly tighten and loosen your safety footwear with one hand and under any conditions, even when you are wearing safety gloves. TLS ensures a fast, safe and easy precision fit that offers enhanced comfort and enables you to perform at your best.



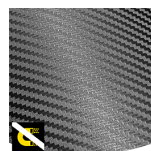
### Rubber outsole

Rubber outsoles provide versatile functions that make them suitable for many areas of application: excellent cut resistance, heat and cold resistance, high flexibility at cold temperatures, resistance against oil, fuel and many chemicals.



### Composite toecap

Metalfree and lightweight, no thermal or electrical conductivity



### Metal free

Metal free safety shoes are in general lighter than regular safety shoes. They are also very beneficial for professionals who have to pass through metal detectors several times a day.



### Slip resistance (SR)

Replaces the previously used term of SRA+SRB=SRC. SR means the slip test has been executed on tiles contaminated with soap and with oil.



### Heel energy absorption

Heel energy absorption reduces the impact of jumps or running on the body of the wearer.

Industries:

Assembly, Automotive, Logistics, Industry

Environments:

Uneven surfaces, Dry environment

Maintenance instructions:

To extend the life of your shoes, we recommend to clean them regularly and to protect them with adequate products. Do not dry your shoes on a radiator, nor nearby a heat source.

	Description	Measure unit	Result	EN ISO 20345
Upper	<b>Microfiber, Recycled Mesh</b>			
	Upper: permeability to water vapor	mg/cm²/h	1.2	≥ 0.8
	Upper: water vapor coefficient	mg/cm²	21	≥ 15
Lining	<b>Recycled Mesh</b>			
	Lining: permeability to water vapor	mg/cm²/h	34.59	≥ 2
	Lining: water vapor coefficient	mg/cm²	277	≥ 20
Footbed	<b>SJ Memory foam footbed</b>			
	Footbed: abrasion resistance (dry/wet) (cycles)	cycles	Dry 25600 cycles/Wet 12800 cycles	25600/12800
Outsole	<b>Phylon/Rubber (NBR)</b>			
	Outsole abrasion resistance (volume loss)	mm³	119.4mm³(Density:1.3)	≤ 150
	Basic Slip resistance - Ceramic + NaLS - Forward heel slip	friction	0.48	≥ 0.31
	Basic Slip resistance - Ceramic + NaLS - Backward forepart slip	friction	0.48	≥ 0.36
	SR Slip resistance - Ceramic + glycerin - Forward heel slip	friction	0.36	≥ 0.19
	SR Slip resistance - Ceramic + glycerin - Backward forepart slip	friction	0.36	≥ 0.22
	Antistatic value	MegaOhm	648	0.1 - 1000
	ESD value	MegaOhm	19.4	0.1 - 100
	Heel energy absorption	J	25	≥ 20
Toecap	<b>Composite</b>			
	Impact resistance toecap (clearance after impact 100J)	mm	NA	N/A
	Compression resistance toecap (clearance after compression 10kN)	mm	NA	N/A
	Impact resistance toecap (clearance after impact 200J)	mm	15.5	≥ 14
	Compression resistance toecap (clearance after compression 15kN)	mm	22.0	≥ 14

Sample size:

Our shoes are constantly evolving, the technical data above may change. All product names and brand Safety Jogger, are registered and may not be used or reproduced in any format, without written consent from us.



Solutions for every workplace

INDUSTRIAL PROFESSIONAL TACTICAL TIGER GRIP

ENGINEERED  
IN EUROPE

www.safetyjogger.com