



SAFETY JOGGER

INDUSTRIAL



Medium

RENA EH SB

RENAEH

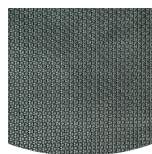
The comfortable all-round safety shoe

Safety Jogger's RENA EH safety shoe is a all-round safety shoe offering SR slip resistance, heat-resistance up to 300°C, and electrical hazard protection. With a rubber outsole and multiple safety features, it's suitable for various industries.

Lining	Mesh
Footbed	SJ foam footbed
Toecap	Composite
Category	SB / WRU, P, SRC, E, HI, CI, FO, HRO, EH
Size range	EU 35-48 / UK 3.0-13.0 / US 3.0-13.5 JPN 21.5-31.5 / KOR 230-315
Sample weight	0.650 kg
Norms	ASTM F2413:2018 EN ISO 20345:2011



BLK



Rubber outsole

Rubber outsoles provide versatile functions that make them suitable for many areas of application: excellent cut resistance, heat and cold resistance, high flexibility at cold temperatures, resistance against oil, fuel and many chemicals.



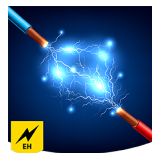
Heat resistant outsole (HRO)

The outsole resists high temperatures up to 300°C.



SRC slip resistance

Slip resistant soles are one of the most important features of safety and occupational footwear. SRC slip resistant soles pass both SRA and SRB slip resistant tests, they are tested on both steel and ceramic surfaces.



Electrical hazard (EH)

Electrical hazard (EH) rated safety shoes have nonconductive outsoles. As a secondary source of protection they reduce the potential for electric shocks under dry conditions.

SAFETY JOGGER
WORKS

Solutions for every workplace

INDUSTRIAL PROFESSIONAL TACTICAL TIGER GRIP

**ENGINEERED
IN EUROPE**

www.safetyjogger.com

Industries:

Automotive, Chemical, Cleaning, Food & beverages, Logistics, Oil & Gas

Environments:

Warm surfaces, Cold environment, Extreme slippery surfaces

Maintenance instructions:

To extend the life of your shoes, we recommend to clean them regularly and to protect them with adequate products. Do not dry your shoes on a radiator, nor nearby a heat source.

	Description	Measure unit	Result	EN ISO 20345
Lining	Mesh			
	Lining: permeability to water vapor	mg/cm²/h	59.5	≥ 2
	Lining: water vapor coefficient	mg/cm²	480	≥ 20
Footbed	SJ foam footbed			
	Footbed: abrasion resistance (dry/wet) (cycles)	cycles	25600/12800	25600/12800
Toecap	Composite			
	Impact resistance toecap (clearance after impact 100J)	mm	N/A	N/A
	Compression resistance toecap (clearance after compression 10kN)	mm	N/A	N/A
	Impact resistance toecap (clearance after impact 200J)	mm	20.5	≥ 14
	Compression resistance toecap (clearance after compression 15kN)	mm	25	≥ 14

Sample size:

Our shoes are constantly evolving, the technical data above may change. All product names and brand Safety Jogger, are registered and may not be used or reproduced in any format, without written consent from us.



Solutions for every workplace

INDUSTRIAL PROFESSIONAL TACTICAL TIGER GRIP



www.safetyjogger.com