

Light

## SAFETYCLOG SB

Easy fitting lightweight safety shoe

The SAFETYCLOG shoes offer exceptional slip resistance, lightweight protection, and comfort. Ideal for various industries and environments, these shoes are easy to clean, and keep your feet dry.

Upper	Expanded EVA
Lining	N/A
Footbed	SJ foam footbed
Midsole	N/A
Outsole	EVA/Rubber (NBR)
Toecap	Composite
Category	SB / SRC, E
Size range	EU 35-47 / UK 3.0-12.0 / US 3.0-13.0 JPN 21.5-31 / KOR 230-310
Sample weight	0.360 kg
Norms	ASTM F2413:2018 EN ISO 20345:2011

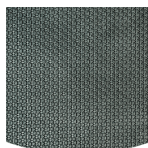


BLK



### Composite toecap

Metalfree and lightweight, no thermal or electrical conductivity



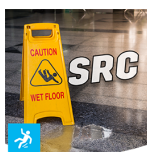
### Rubber outsole

Rubber outsoles provide versatile functions that make them suitable for many areas of application: excellent cut resistance, heat and cold resistance, high flexibility at cold temperatures, resistance against oil, fuel and many chemicals.



### Removable insole

Renew your insole at a regular base or use your own orthopedic insoles for a higher comfort.



### SRC slip resistance

Slip resistant soles are one of the most important features of safety and occupational footwear. SRC slip resistant soles pass both SRA and SRB slip resistant tests, they are tested on both steel and ceramic surfaces.

Industries:

Catering, Cleaning, Food & beverages, Medical

Environments:

Dry environment, Wet environment

Maintenance instructions:

To extend the life of your shoes, we recommend to clean them regularly and to protect them with adequate products. Do not dry your shoes on a radiator, nor nearby a heat source.

	Description	Measure unit	Result	EN ISO 20345
Upper	Expanded EVA			
	Upper: permeability to water vapor	mg/cm²/h	N/A	≥ 0.8
	Upper: water vapor coefficient	mg/cm²	N/A	≥ 15
Lining	N/A			
	Lining: permeability to water vapor	mg/cm²/h	N/A	≥ 2
	Lining: water vapor coefficient	mg/cm²	N/A	≥ 20
Footbed	SJ foam footbed			
	Footbed: abrasion resistance (dry/wet) (cycles)	cycles	25600/12800	25600/12800
Outsole	EVA/Rubber (NBR)			
	Outsole abrasion resistance (volume loss)	mm³	87	≤ 150
	Outsole slip resistance SRA: heel	friction	0.35	≥ 0.28
	Outsole slip resistance SRA: flat	friction	0.36	≥ 0.32
	Outsole slip resistance SRB: heel	friction	0.22	≥ 0.13
	Outsole slip resistance SRB: flat	friction	0.27	≥ 0.18
	Antistatic value	MegaOhm	N/A	0.1 - 1000
	ESD value	MegaOhm	N/A	0.1 - 100
	Heel energy absorption	J	25	≥ 20
Toecap	Composite			
	Impact resistance toecap (clearance after impact 100J)	mm	N/A	N/A
	Compression resistance toecap (clearance after compression 10kN)	mm	N/A	N/A
	Impact resistance toecap (clearance after impact 200J)	mm	16.0	≥ 14
	Compression resistance toecap (clearance after compression 15kN)	mm	17.5	≥ 14

Sample size:

Our shoes are constantly evolving, the technical data above may change. All product names and brand Safety Jogger, are registered and may not be used or reproduced in any format, without written consent from us.



Solutions for every workplace

INDUSTRIAL PROFESSIONAL TACTICAL TIGER GRIP

ENGINEERED  
IN EUROPE

www.safetyjogger.com